

**260F
SERIES and
385F**

**FLANGED THERMOWELLS
FOR 1/4" AND 3/8" DIAMETER ELEMENTS**

APPLICATION:

260F series fits standard length 1/4" diameter elements.
385F series fits standard length 3/8" diameter elements.

FLANGE SIZES:

1" and 1 1/2" flanges in all facings and pressure ratings are standard. Other sizes are available on application.

MATERIALS:

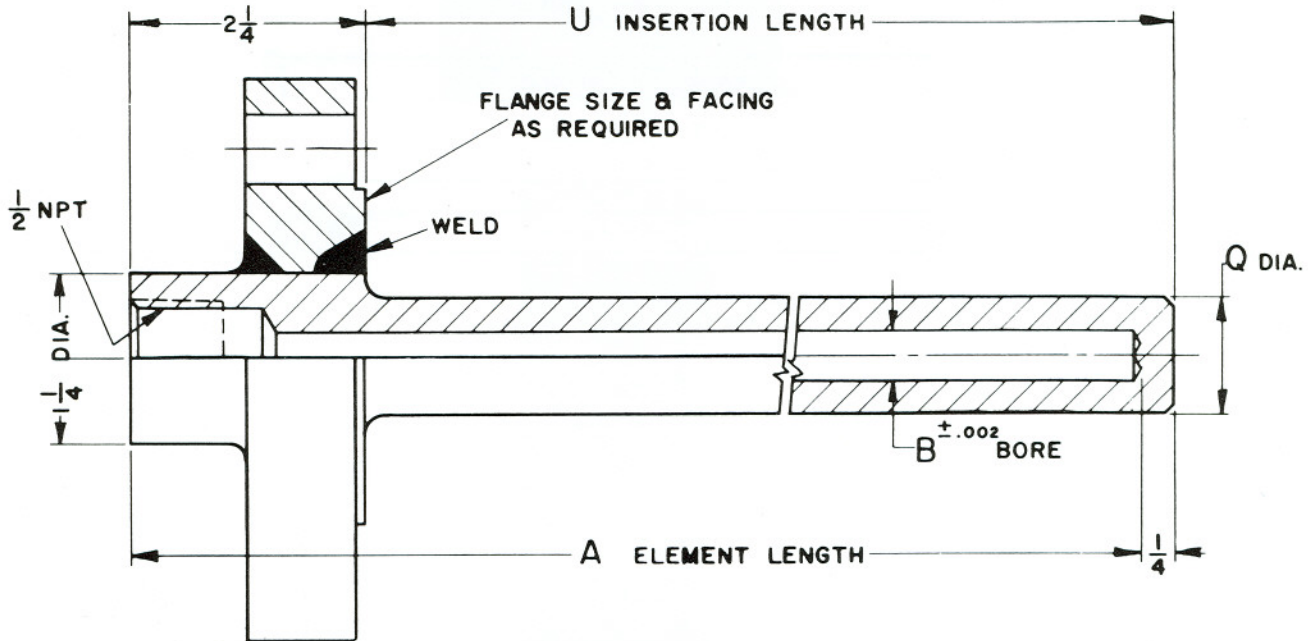
Flanges and wells made of Carbon Steel (C-1018), A.I.S.I. - 304, A.I.S.I. - 316 and Monel are available for quick delivery. Other materials are available.

WELDING:

Primary weld is "J" groove type, secondary weld is 45° bevel groove. Welding is performed by Navy certified welders using inert gas shielded arc.

CAP & CHAIN:

Brass captive cap is available for keeping well bore clean when not in use.



SERIES 260F

TYPE NUMBER	ELEM. LGTH. A	INSERT. LGTH. U	SHANK DIA. Q	BORE DIA. B
260F -U 2	4	2	3/4	.260
-U 4	6	4	"	
-U 7	9	7	"	
-U10	12	10	"	
-U13	15	13	"	
-U16	18	16	"	
-U22	24	22	"	

SERIES 385F

TYPE NUMBER	ELEM. LGTH. A	INSERT. LGTH. U	SHANK DIA. Q	BORE DIA. B
385F -U 2	4	2	7/8	.385
-U 4	6	4	"	
-U 7	9	7	"	
-U10	12	10	"	
-U13	15	13	"	
-U16	18	16	"	
-U22	24	22	"	

**MAXIMUM FLANGE PRESSURE - TEMPERATURE RATING *
LBS. PER SQ. INCH**

MATERIAL	TEMPERATURE — °F.					
	0°	200°	400°	600°	800°	1000° 1125°
Carbon Steel	UP ————— TO —————			2500#		
A.I.S.I. — 304	UP ————— TO —————			2500#		
A.I.S.I. — 316	UP ————— TO —————			2500#		
Monel	UP ————— TO —————			2500#		

* Values based on allowable stress levels published in the 1956 Edition of the A.S.M.E. Boiler Code, Section VIII and recommendations of ASA B 16,5-1957

TO ORDER, PLEASE SPECIFY:

1. Complete Type Number
2. Material
3. Flange Size, Pressure & Facing
4. Cap and Chain, If Desired